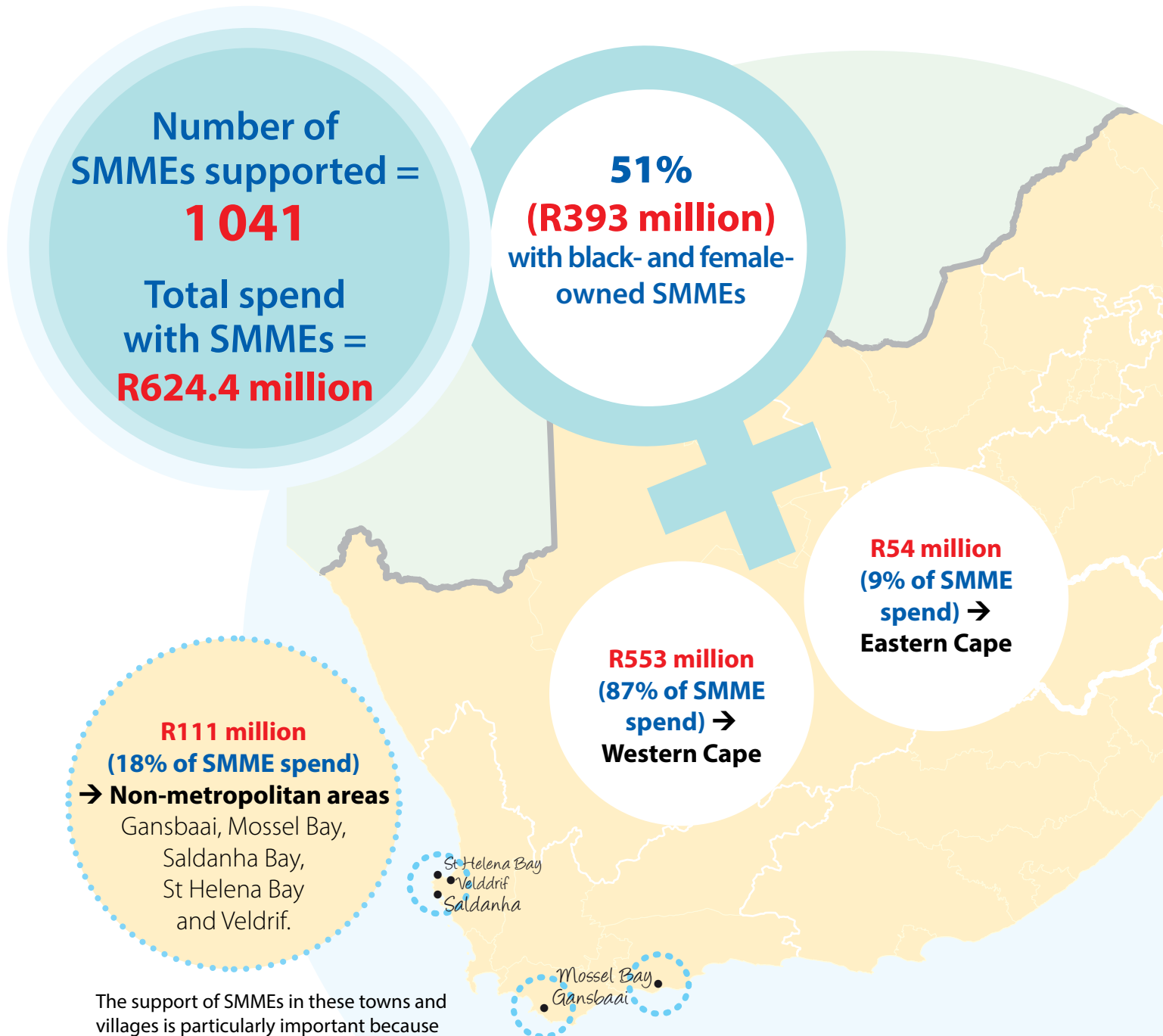


The impact of the hake deep-sea trawl fishery on SMMEs

Right holders in the hake deep-sea trawl fishery make a significant contribution to the South African economy through their expenditure on goods and services. A significant portion of this expenditure is with small, medium and micro enterprises (SMMEs).¹

Business activity is concentrated in the Western and Eastern Cape.



The support of SMMEs in these towns and villages is particularly important because of a general lack of social and economic opportunities in these areas.

¹ Data was compiled by independent economists Genesis Analytics in 2020, using data from the 2019 fishing year.

Examples



Moosa's Enterprises

Moosa's Enterprises is a black-owned transport company that offers transport services to several rights holders in the hake deep-sea trawl fishery. Over the past three-and-a-half decades, Moosa's Enterprises has grown into one of the largest fully contained load transporters in Cape Town, with a fleet of over 90 trucks, semi-trailers and refrigerated vehicles. The business employs 120 people on a permanent basis.

MCK Engineering

MCK engineering is a black-owned engineering company which was established by Morné Kurtz in 2007. The company started in a small workshop in Saldanha Bay with five employees. Over the past 14 years, MCK has developed into a multifaceted organisation that employs 72 people. MCK estimates that the hake deep-sea trawl fishery accounts for 70% of its income. [READ MORE HERE](#)



Desi Industrial Psychologists



Desi Industrial Psychologists is a black female-owned company established in Port Elizabeth in 2016 by industrial psychologist, Babalwa Desi. The company offers a range of human resources services, including psychometric assessments, surveys, dispute resolution, employee engagement, employment management, configuration of internal policies and procedures, and talent development.

Desi Industrial Psychologists derives 70% of its total revenue from a company active in the hake deep-sea trawl fishery.

Paulse Coaches and Paulse Transport

Paulse Coaches and Paulse Transport are two family-owned businesses that operate out of Saldanha Bay. The businesses are black-owned and run by members of the same family. Both companies are engaged in the transportation of employees on behalf of companies that operate on the west coast of South Africa. Paulse Coaches makes use of 65-seater buses, whereas Paulse Transport operates much smaller vehicles. Approximately 25% of the two companies' income is derived from a rights holder in the hake deep-sea trawl fishery.



Contact:

The South African Deep-Sea Trawling Industry Association
 Tel: 021 425 2727 or 082 829 3911
 Email: johann@sadstia.co.za www.sadstia.co.za

Unlocking the value of the Cape hake resource